

ITS Resource Center Home

Finding your IP & MAC Address

Contact Information

Help Desk & Training Services

315-859-4181

helpdesk@hamilton.edu

M-F 8 a.m. - 10 p.m.

Sa-Su 10 a.m. - 10 p.m.

Windows

1. Click **Start** and choose **Run**.
 2. In the space next to **Open**, erase anything that is there and type: **cmd**
 3. Click **OK**.
 4. In the window that opens, type the following **ipconfig /all** and press .
 1. The MAC address is on the line labeled *Physical Address*. It will look something like *00-06-5B-C4-86-66*. If you have more than one networking card, you will have more than one MAC address. It will also be labeled *Physical Address* but under a different heading. I.E. one heading may be Ethernet adapter Local Area Connection and one may be Ethernet adapter Wireless Network Connection
 2. The IP address is on the line labeled *IP Address*. It will look something like *150.209.7.162*.
 5. To close this window, click the X in the upper right corner or type *Exit* and hit
-

```
C:\Windows\system32\cmd.exe
Connection-specific DNS Suffix . : 
Description . . . . . : Microsoft Virtual WiFi Miniport Adapter
Physical Address. . . . . : 00-24-D7-04-A5-FD
DHCP Enabled. . . . . : Yes
Autoconfiguration Enabled . . . . : Yes

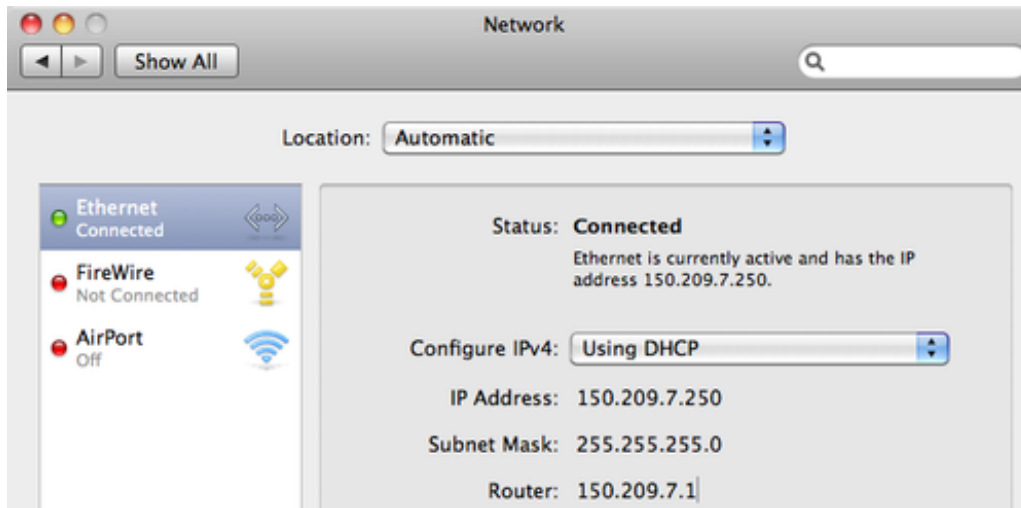
Wireless LAN adapter Wireless Network Connection:
Connection-specific DNS Suffix . : hamilton.edu
Description . . . . . : Intel(R) Centrino(R) Ultimate-N 6300 AGN
Physical Address. . . . . : 00-24-D7-04-A5-FC
DHCP Enabled. . . . . : Yes
Autoconfiguration Enabled . . . . : Yes
IPv4 Address. . . . . : 150.209.35.8(Preferred)
Subnet Mask . . . . . : 255.255.248.0
Lease Obtained. . . . . : Friday, February 24, 2012 4:05:05 PM
Lease Expires . . . . . : Friday, February 24, 2012 5:05:04 PM
Default Gateway . . . . . : 150.209.32.1
DHCP Server . . . . . : 1.1.1.1
DNS Servers . . . . . : 150.209.88.21
                        150.209.4.21
                        24.92.226.11
NetBIOS over Tcpip. . . . . : Enabled

Ethernet adapter Local Area Connection:
Connection-specific DNS Suffix . : hamilton.edu
Description . . . . . : Intel(R) 82577LM Gigabit Network Connection
Physical Address. . . . . : 00-26-B9-C7-A3-7D
DHCP Enabled. . . . . : Yes
Autoconfiguration Enabled . . . . : Yes
Link-local IPv6 Address . . . . . : fe80::d8f2:3457:c491:4edf%11(Preferred)
IPv4 Address. . . . . : 150.209.7.208(Preferred)
Subnet Mask . . . . . : 255.255.255.0
Lease Obtained. . . . . : Friday, February 24, 2012 2:03:43 PM
Lease Expires . . . . . : Saturday, February 25, 2012 2:03:43 PM
Default Gateway . . . . . : 150.209.7.1
DHCP Server . . . . . : 150.209.88.21
DHCPv6 IAID . . . . . : 251668153
DHCPv6 Client DUID. . . . . : 00-01-00-01-15-D7-66-F3-00-26-B9-C7-A3-7D

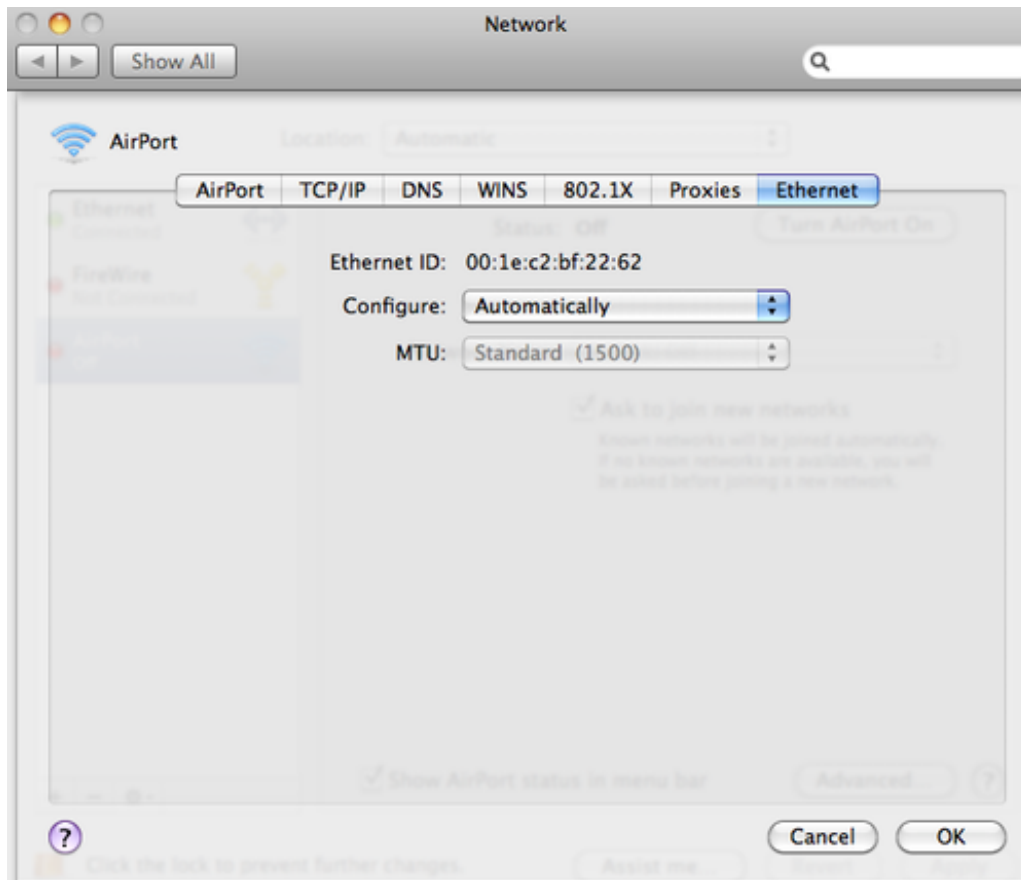
DNS Servers . . . . . : 150.209.88.21
                        150.209.4.21
```

Macintosh

1. Click the Apple icon on the upper left corner of the screen and go to **System Preferences**.
2. Select **Network** and select their internet connection in the left taskbar (Ethernet or Airport/Wi-Fi). You'll find the IP address listed under status.



3. To find the MAC address, click **Advanced**.
4. Navigate to the Ethernet or AirPort tab and you'll find the MAC address listed next to *Ethernet ID* or *Airport ID*.



Last Updated: February 24, 2012