

# ITS Resource Center Home

## Secure Wireless Setup - Windows 7

### Contact Information

Help Desk & Training Services

315-859-4181

helpdesk@hamilton.edu

M-F 8 a.m. - 10 p.m.

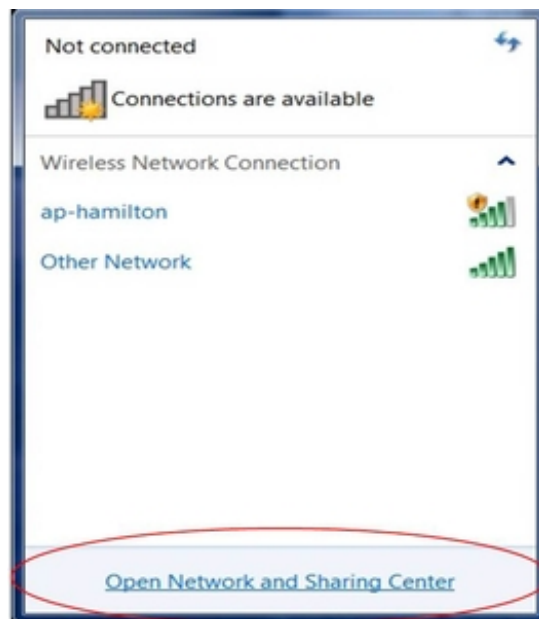
Sa-Su 10 a.m. - 10 p.m.

### For Personal Computers

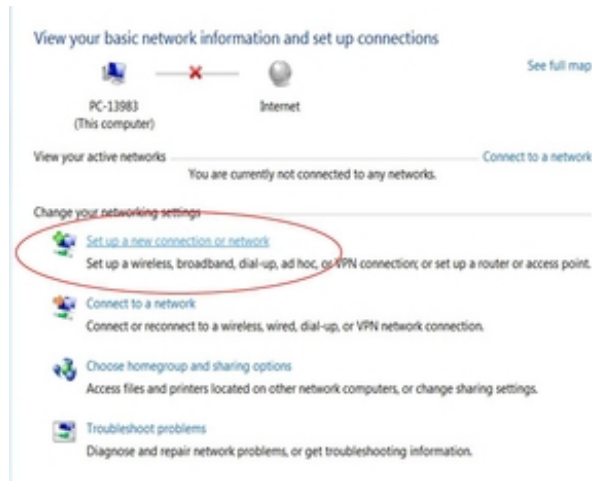
1. To begin, left-click on the **Wireless** icon in the taskbar.



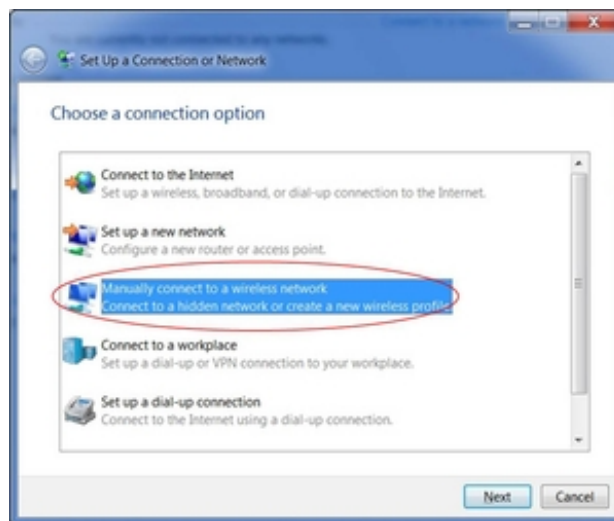
2. Select **Open Network and Sharing Center** in the menu that pops up.



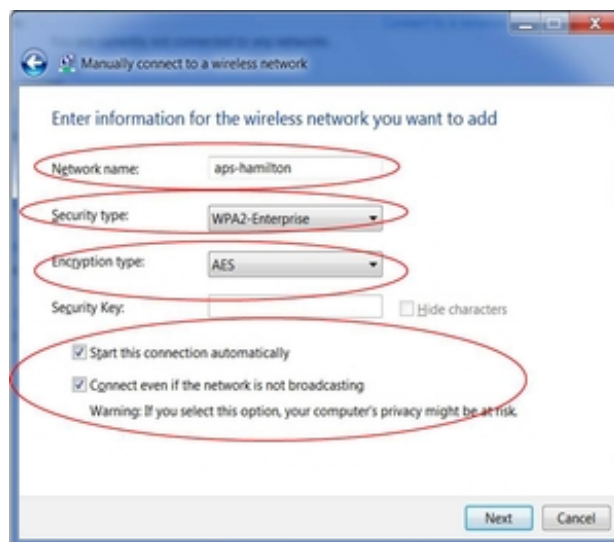
3. In the **Network and Sharing Center**, select **Set up a new connection or network**.



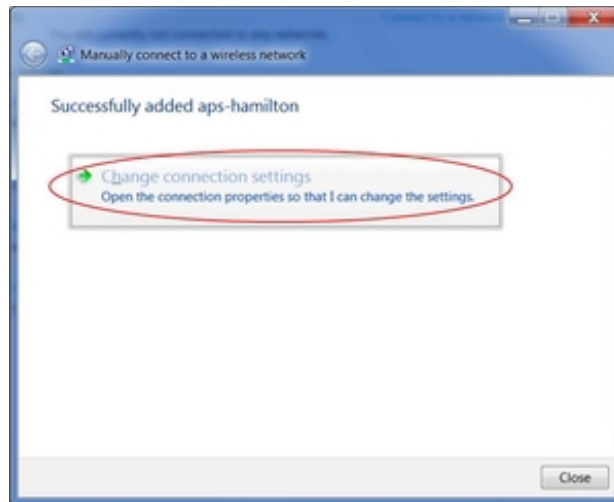
4. Select **Manually Connect to a wireless network** in the window that appears.



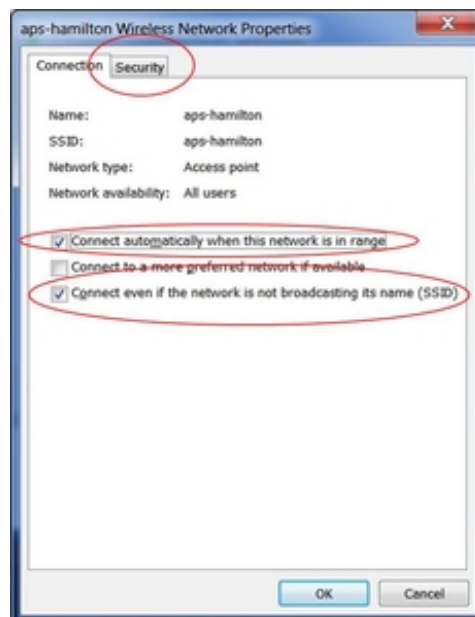
5. In the screen that appears, type *aps-hamilton* in the *Network Name* field and select **WPA2-Enterprise** and **AES** from the pull-down menus. When finished, left-click the **Next** button.



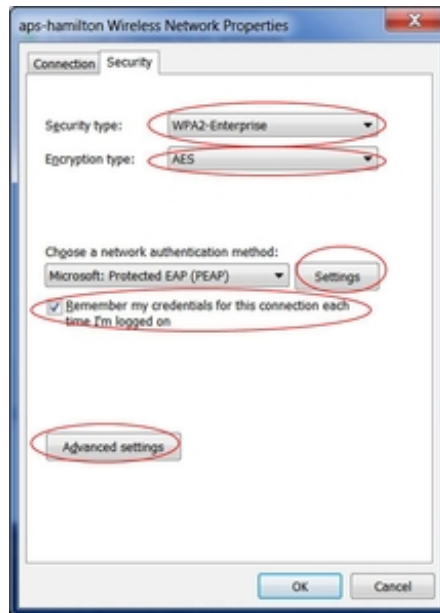
6. After you see *Successfully added aps-hamilton*, left-click **Change Connection settings**.



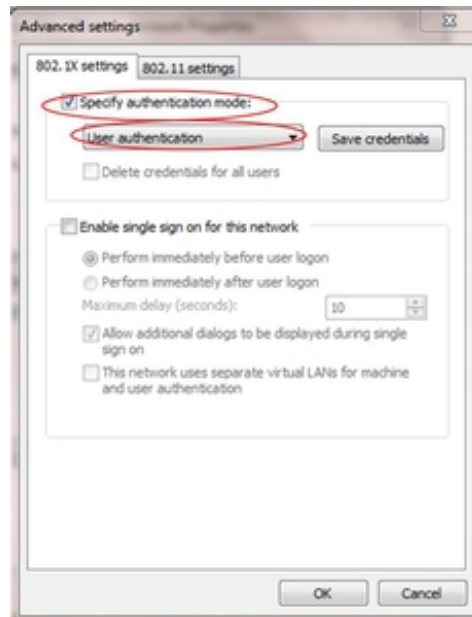
7. Ensure the two checkboxes labeled *Connect Automatically when the network is in range* and *Connect even if the network is not broadcasting its name (SSID)* are **checked**. Now click on the **Security** tab.



8. In the **Security** tab, check *Remember my credentials for this connection each time I'm logged in*.



9. Click **Advanced Settings**.



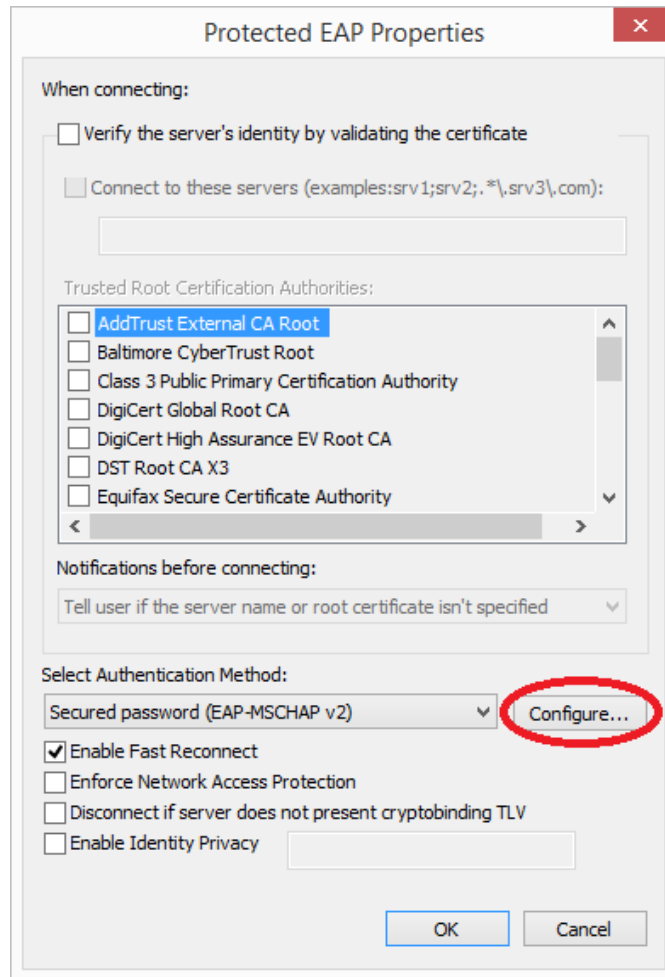
10. Check **Specify Authentication Mode**.

11. Select **User Authentication** in the pull-down menu.

12. Click **OK**.

13. Click on **Settings** next to “*Microsoft: Protected EAP [PEAP]*”

---



10. Finish by clicking **Configure** next to “*Secured password [EAP-MSCHAP v2]*” Uncheck “*Automatically use my Windows logon name and password...*” and click **OK**.

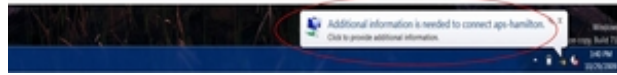


16. Click **OK**.  
17. Also click **OK** in all remaining dialogue boxes.



**NOTE:** If you are pre-configuring your laptop at home to prepare it for the Hamilton wireless network please stop here, otherwise you can continue to step 18. When you arrive on campus, your laptop should automatically attempt to connect to aps-hamilton. When it finds our network you will be prompted to log in using your Hamilton ID and your password as shown in steps 18-21 below. In the event you cannot connect to our wireless network while on campus, please contact the Help Desk for assistance at 315-859-4181.

18. You should notice a popup balloon in the lower-right hand corner that says “*Additional information is required to connect to aps-hamilton.*” Left-click on this balloon



19. If you are a student, please enter “HAMILTON-S\*username*” (replace "username" with your Hamilton username) in the first field and your password in the second.



20. Left-click on **OK** when finished.

21. You should now be connected to the internet.

*Last Updated: July 24, 2014*