

# ITS Resource Center Home

## Print Driver Installation for Mac OS X 10.6.x-10.9.x

### Contact Information

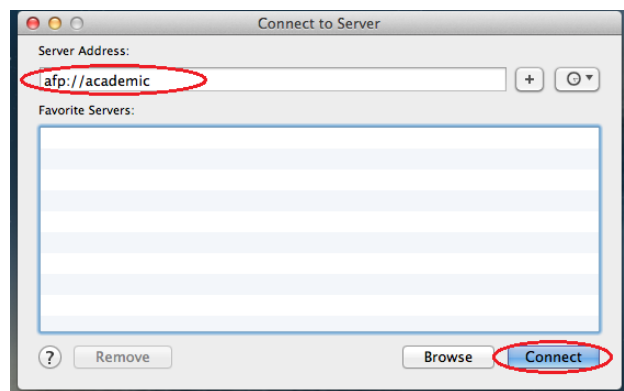
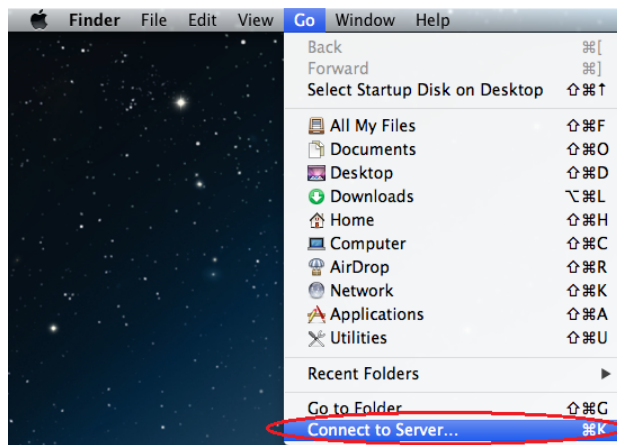
Help Desk & Training Services  
315-859-4181  
helpdesk@hamilton.edu

M-F 8 a.m. - 10 p.m.  
Sa-Su 10 a.m. - 10 p.m.

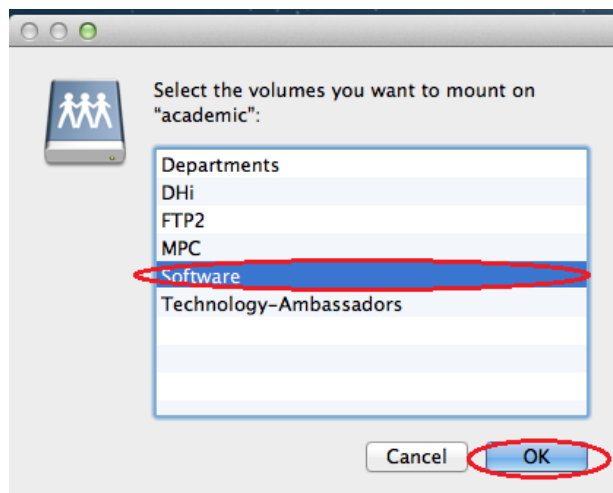
[Back to Printing at Hamilton College](#)

**NOTE:** These instructions must be followed before proceeding to install the HP LaserJet 4015 printer.

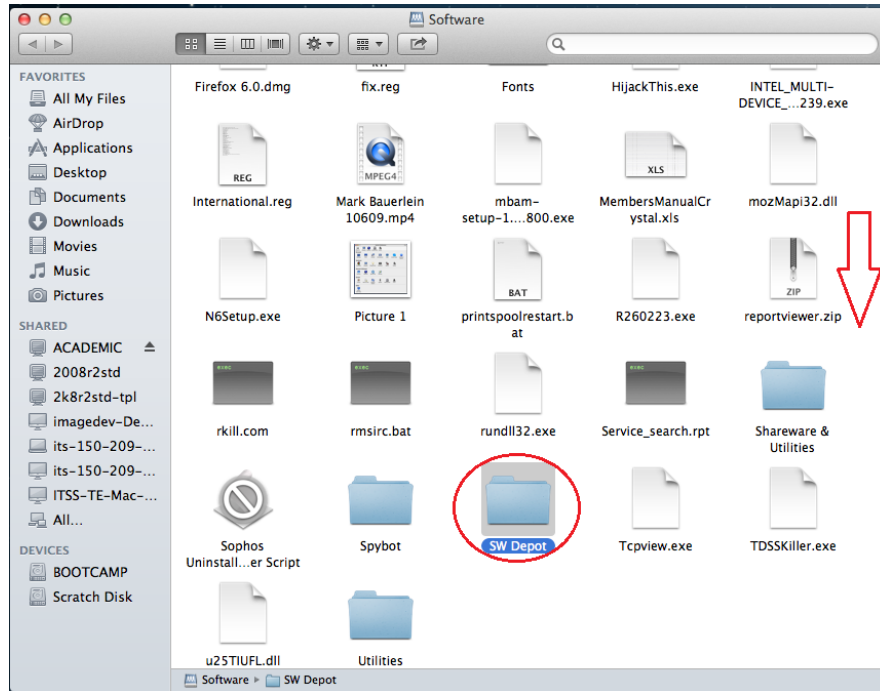
1. The installer is located on the Software server.
  - a. Click on **Go** and then **Connect to Server**.
  - b. Enter *academic* for the Server Address.
  - c. Click on **Connect**.



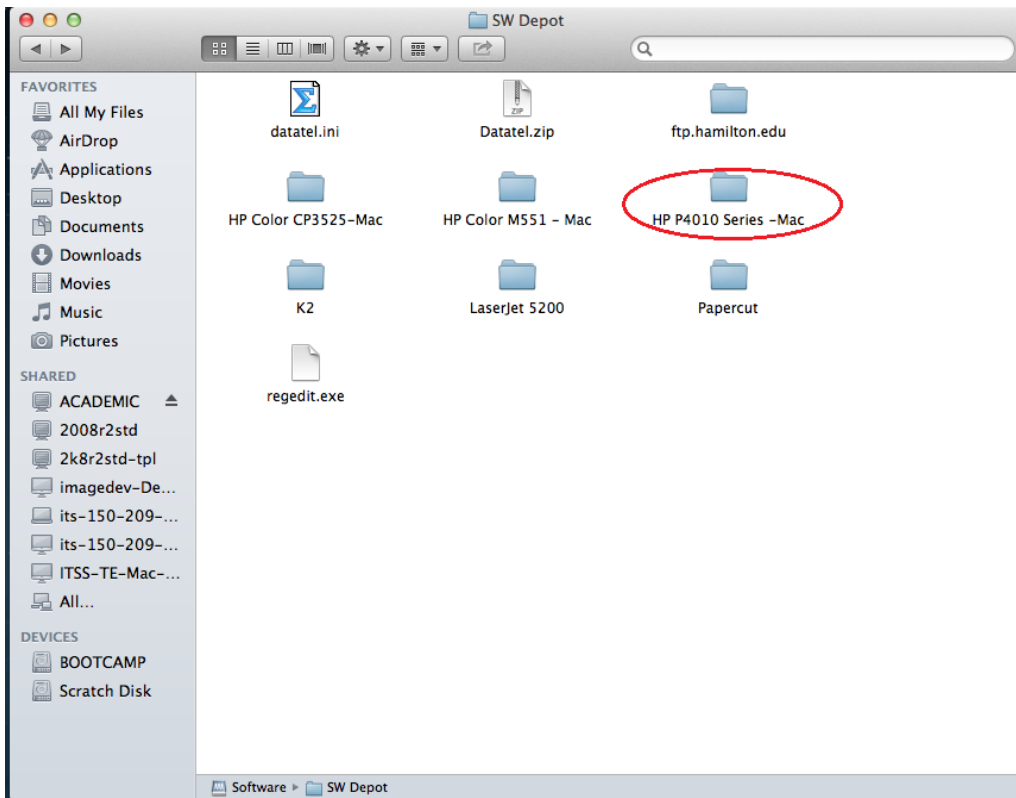
2. Click on *Software*. Click on **OK**.



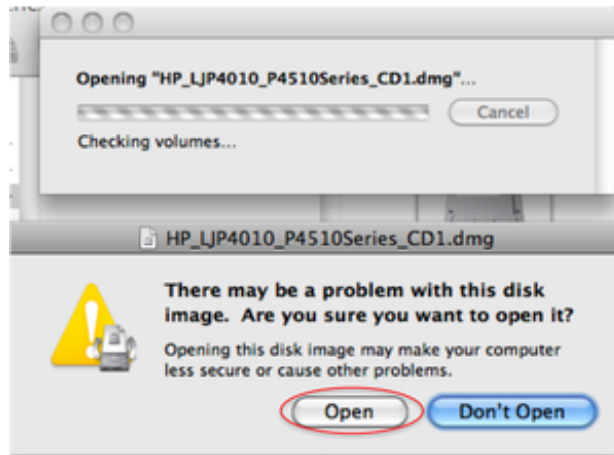
3. Click on the *SW Depot* folder.



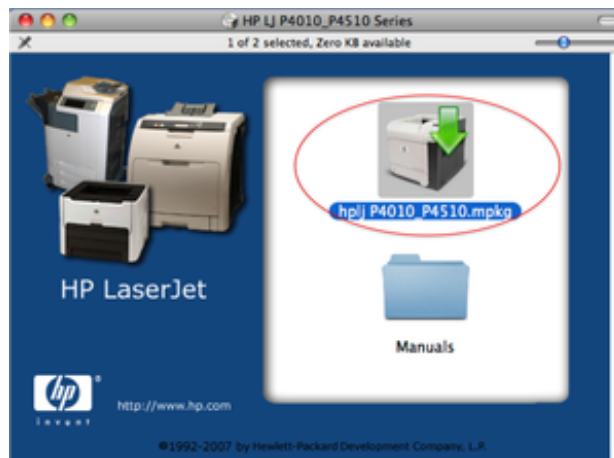
4. Open the *HP P4010 Series-Mac* folder. Double-click on the *HP\_LJP4010\_P4510Series\_CD1.dmg*



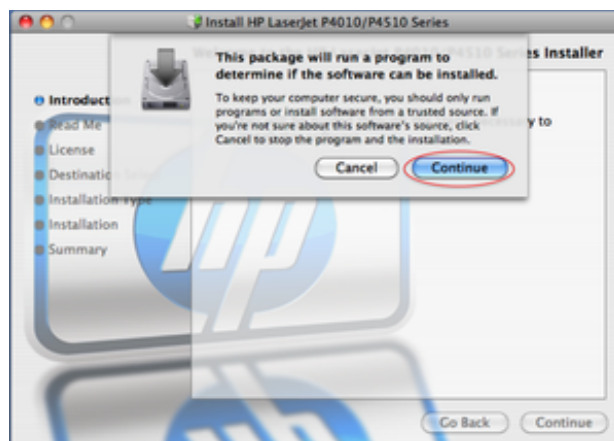
5. In the window that appears, click **Open**.



5. In the next window that appears, double-click the printer icon.



6. Click **Continue**. In the next window, be sure to **Agree** to the terms of the software license agreement.



7. Select the **Macintosh HD** drive and click **Continue**.



8. This will prompt you to enter your Macintosh credentials. Click **OK**.



9. You have successfully installed the print driver and can now follow the documentation for installing the printer here:

<https://my.hamilton.edu/its/rc/its-ic-lab-printer-installation-for-mac-os-x-10-5x-10-8-x>

*Last Updated: August 15, 2013*