

# ITS Resource Center Home

## Secure Wireless Setup - Windows XP for Employees

### Contact Information

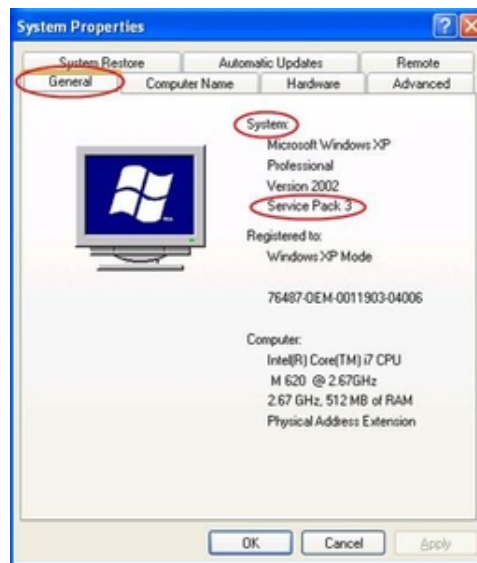
Help Desk & Training Services  
315-859-4181  
helpdesk@hamilton.edu

M-F 8 a.m. - 10 p.m.  
Sa-Su 10 a.m. - 10 p.m.

### For Institutional Computers Connected to Hamilton's Network

This document explains how to connect a Hamilton-owned Windows XP computer to the Hamilton Secure Wireless network. If you are attempting to connect a personally-owned Windows XP computer to the secure wireless, please refer to the document HTO-SecureWinPersonal-XP.pdf.

1. Verify that you have Service Pack 3 on your Windows XP computer. Right-click on **My Computer** (either on your desktop or in your Start Menu) and click on **Properties**. In the **System Properties** window that appears, make sure the **General** tab is selected. Your Windows version (along with any Service Pack information) should be listed under the System section. If you do not have Service Pack 3 installed, you will need to do that first before continuing with these instructions. Please refer to <http://windows.microsoft.com/en-US/windows/help/learn-how-to-install-windows-xp-service-pack-3-sp3> for instructions on how to install Service Pack 3 for Windows XP.



2. Click on the **Start** button and then on **Run**.
3. Next to **Open**, type *control netconnections* and click **OK**.



4. In the **Network Connections** window, right-click on **Wireless Network Connection** and click on **Properties**.

5. Click on the **Wireless Networks** tab. If the **Wireless Networks** tab is missing, it is likely that your wireless device's vendor client is managing the wireless connection. You will need to disable that client to restore control of the wireless device back to Windows before continuing.
6. Make sure that *Use Windows to configure my wireless network settings* is **checked**, and click the **Add** button.



7. Under the **Association** tab, configure as follows:
  - a. Next to **Network name (SSID)**, enter aps-hamilton
  - b. **Check** the box next to Connect even if this network is not broadcasting.
  - c. Next to **Network Authentication**, select **WPA2** from dropdown (if available). If WPA2 is not available, select WPA instead.
  - d. Next to **Data Encryption**, select **AES** from the dropdown.



8. Under the **Authentication** tab, configure as follows:
  - a. Next to **EAP type**, select **Protected EAP (PEAP)** from the drop-down.
  - b. Click on the **Properties** button.



9. In the **Protected EAP Properties** window, configure as follows:
  - a. **Uncheck** *Connect to these servers*.
10. Next to *Select Authentication Method*, click on the **Configure** button.
11. Verify that *Automatically use my windows logon name and password* is **checked**, and click **OK**.



12. Click **OK** to close out of each window that is still open.
13. After a minute or two, a popup message should appear in the lower right corner of the screen indicating that you are now connected to aps-hamilton. Your laptop should now connect to Hamilton's Secure Wireless network automatically whenever you are within range of the network.

*Last Updated: October 28, 2014*