

ITS Resource Center Home

Connecting to SSS in Windows XP

Contact Information

Help Desk & Training Services
315-859-4181
helpdesk@hamilton.edu

M-F 8 a.m. - 10 p.m.
Sa-Su 10 a.m. - 10 p.m.

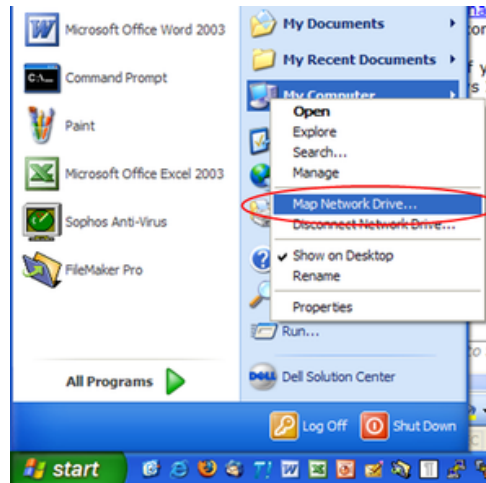
On-Campus

This document explains how to connect to the Student Storage Server (SSS) with Windows XP while on-campus.

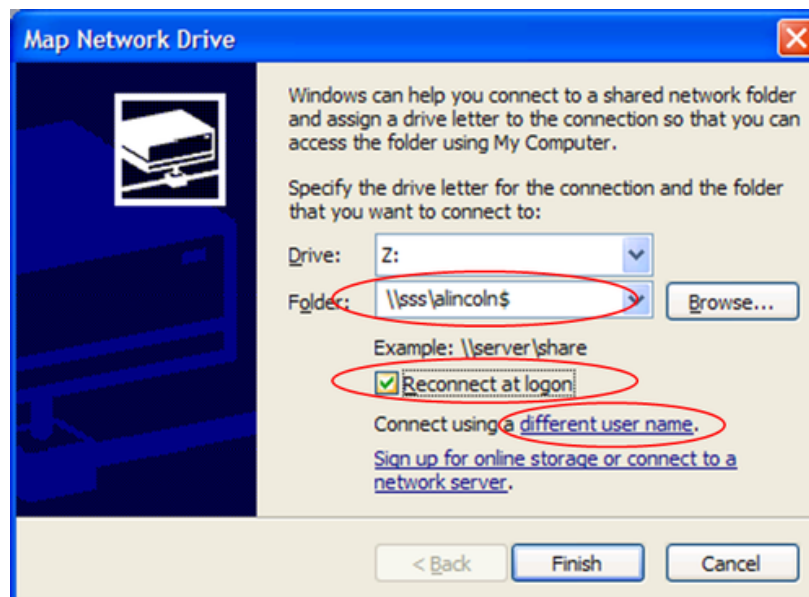
Mapping a Network Drive

You can map a network drive in Windows XP so that you can easily access your SSS space.

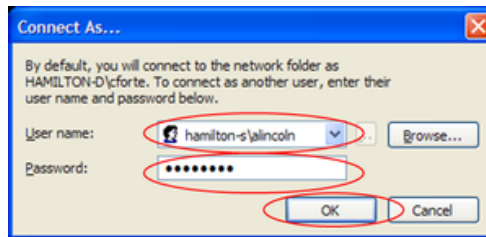
1. To set up a mapped drive go to **Start**, right click on **My Computer**, and select **Map Network Drive**.



2. Next to **Drive:**, set the letter to H: or any other available letter.
3. Next to **Folder:**, using your username, enter `\\sss\username$`. For example, if your name was Abraham Lincoln you would enter `\\sss\alincolin$`. Check the box to **Reconnect at logon**. Click on **Connect using a different user name**.



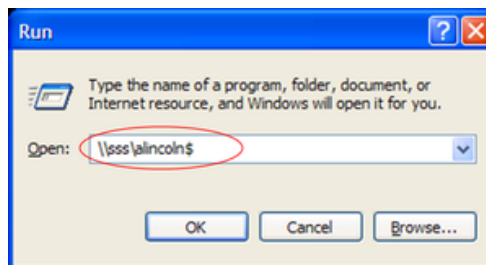
4. Using your username, enter *hamilton-s\username* next to **User Name**. For example, if your name was Abraham Lincoln, you would enter *hamilton-s\alincaln*. Enter your network password next to **Password**. This password is likely to be the same as your e-mail password. If it is not, you can synchronize them following the directions outlined in this document: <http://my.hamilton.edu/information-technology-services/resource-center/changing-your-hillconnect-and-ess-sss-passwords>



5. After entering the information as outlined above, click **OK**. You will be back at the first dialog box pictured in step 3. Click **Finish**. Your SSS folder will be mapped as the drive you specified in step 3. Simply open **My Computer** and it will be listed under **Network Drives**.

Using a Run Command

You can also get to your SSS folder by going to **Start** and clicking on **Run**. Using your username, enter `\\sss\username$`. For example, if your name was Abraham Lincoln you would enter `\\sss\alincaln$`.



A window may pop up asking for your user name and password, much like the one in the figure for step 4 above. Follow the same procedure outlined in step 4 to authenticate. After doing so, your SSS folder should open.

Last Updated: April 4, 2012