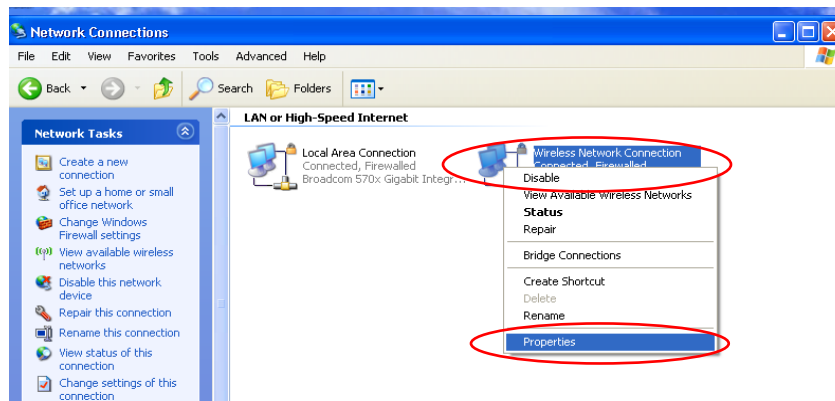


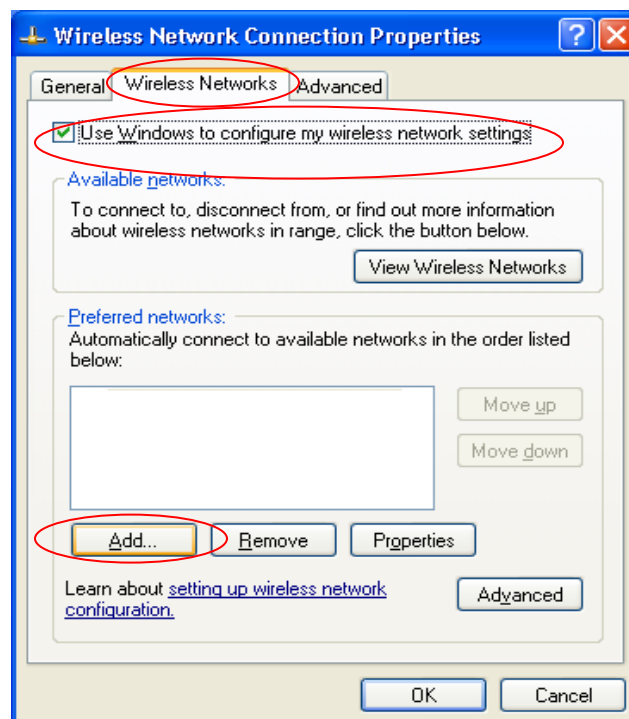
Secure Wireless Setup – Windows XP Personal For Personal Computers

NOTE: If you are not on the Hamilton campus please go through the step-by-step instructions until you come to the stop sign. Then when you arrive on campus you can complete the last few steps to connect to our secure wireless network. If you are on campus please proceed through all the instructions in the document.

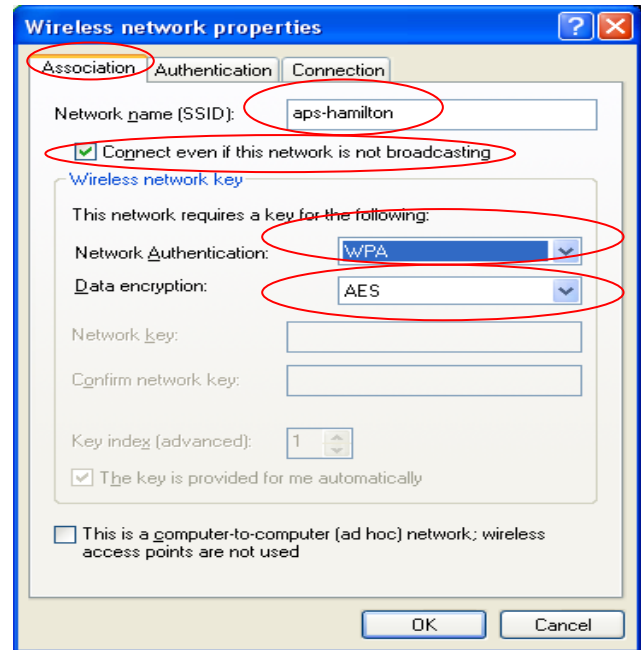
1. Go to the following Microsoft webpage and follow the directions listed there to install the Update for Windows XP (KB917021) NOTE: Restart will be required after installation:
<http://www.microsoft.com/downloads/details.aspx?FamilyID=2726f32f-d52b-4f84-ace8-f7fc20195769&DisplayLang=en>
2. Go to **Start menu** and open **Control Panel**
3. Double click **Network Connections**
4. **Right-click** **Wireless Network Connection** and select **Properties**.



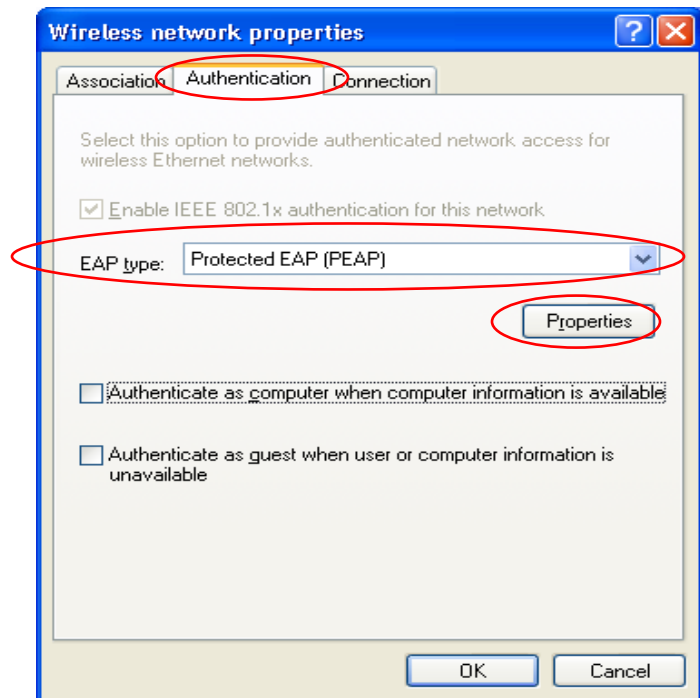
5. Go to the **Wireless Networks** tab
NOTE:(if tab is unavailable, the vendor client is managing wireless and needs to be **disabled**)



6. Click **Add** and configure:
 - o Go to the **Association** tab
 - For **Network name(SSID)**: type **aps-hamilton**
 - Check the box **Connect even if this network is not broadcasting**
 - For **Network Authentication:**, select **WPA2** (if available, otherwise **WPA**)
 - For **Data Encryption:**, select **AES**

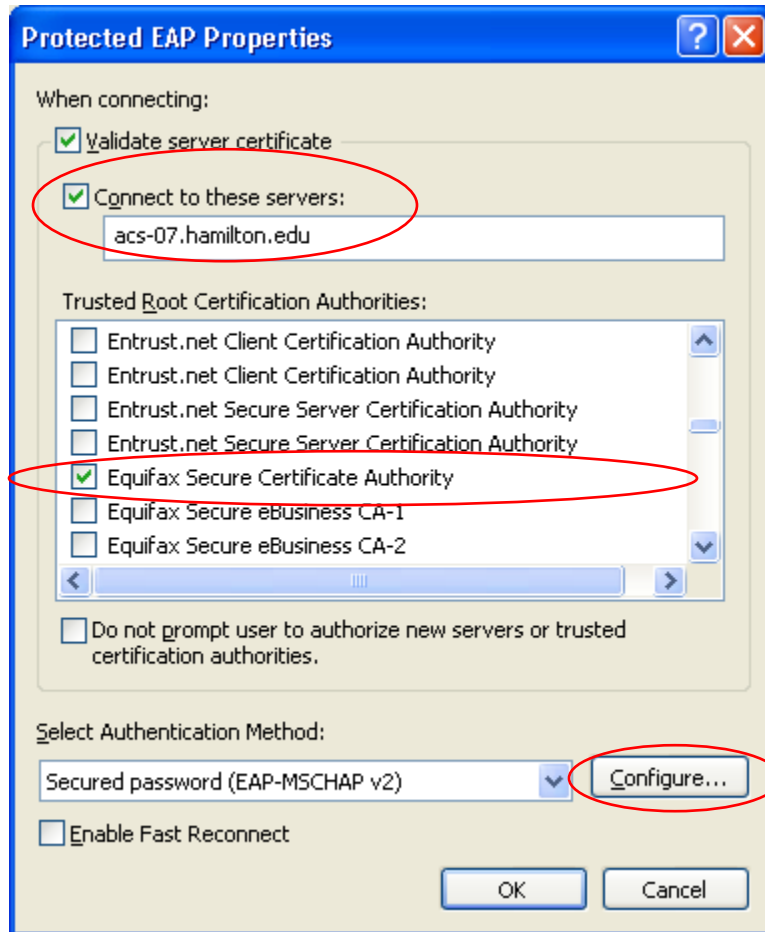


7. Go to the **Authentication** tab
 - For **EAP type:**, select **Protected EAP (PEAP)**
 - **Uncheck** *Authenticate as computer when computer information is available*
 - Click the **Properties** button

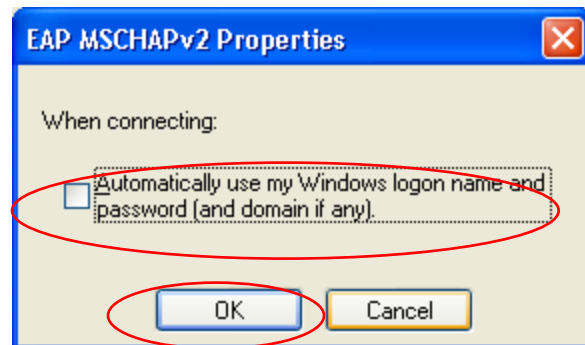


8. Check **Connect to servers** and type **acs-07.hamilton.edu**
9. Scroll down list and check **Equifax Secure Certificate Authority**.

10. Click **Configure**.

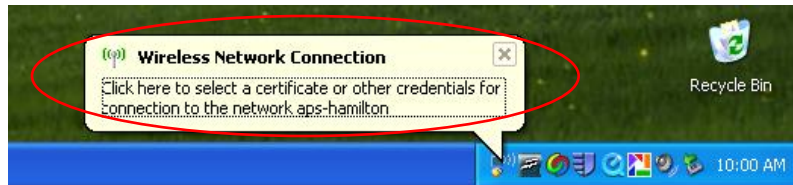


11. Uncheck **Automatically use my windows logon name and password** and Click **OK**.
12. Click **OK** to close all the windows that are still open.

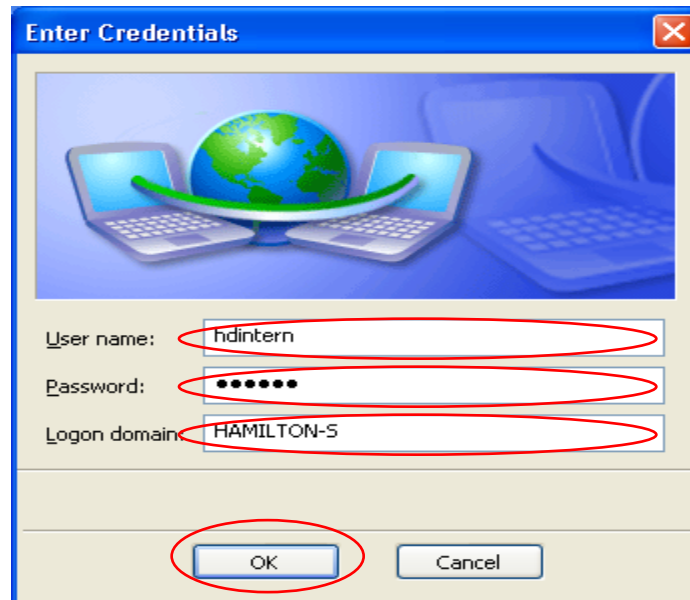


NOTE: If you are pre-configuring your laptop at home to prepare it for the Hamilton wireless network please stop here, otherwise you can continue to step 13. When you arrive on campus, your laptop should automatically attempt to connect to aps-hamilton. When it finds our network you will be prompted to log in using your Hamilton ID and your password as shown in steps 13-15 below. In the event you cannot connect to our wireless network while on campus, please contact the Help Desk for assistance at 315-859-4181.

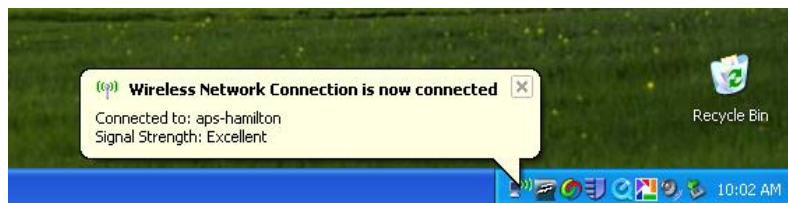
13. After a minute or two a message should appear near the taskbar stating 'Click here to select a certificate or other credentials...' Click on this message to connect.



14. Enter username, password, and domain. (Hamilton-D for employees, Hamilton-S for students) and click **OK**.



15. You should see a Wireless Taskbar message indicating that you are connected to the network.



For questions or comments regarding this document, please email helpdesk@hamilton.edu.