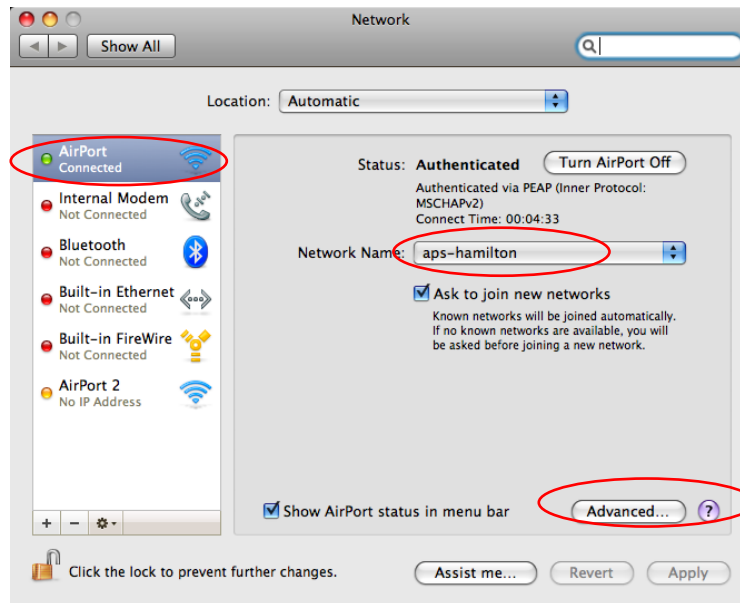


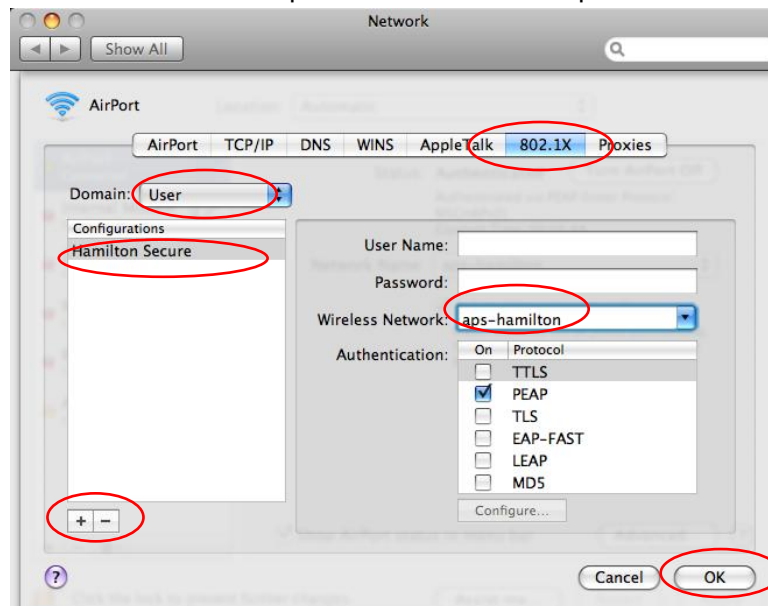
Connecting to Secure Wireless 10.5.1 & 10.5.2 Mac Laptops only

Configuration System Preferences

1. Click on the Apple menu icon in the upper-left corner of the screen and open **System Preferences**.
 - a. Click on the **Network** icon near the middle of the window.
 - b. On the left column click on **Airport**.
 - c. Click on **Advanced**.

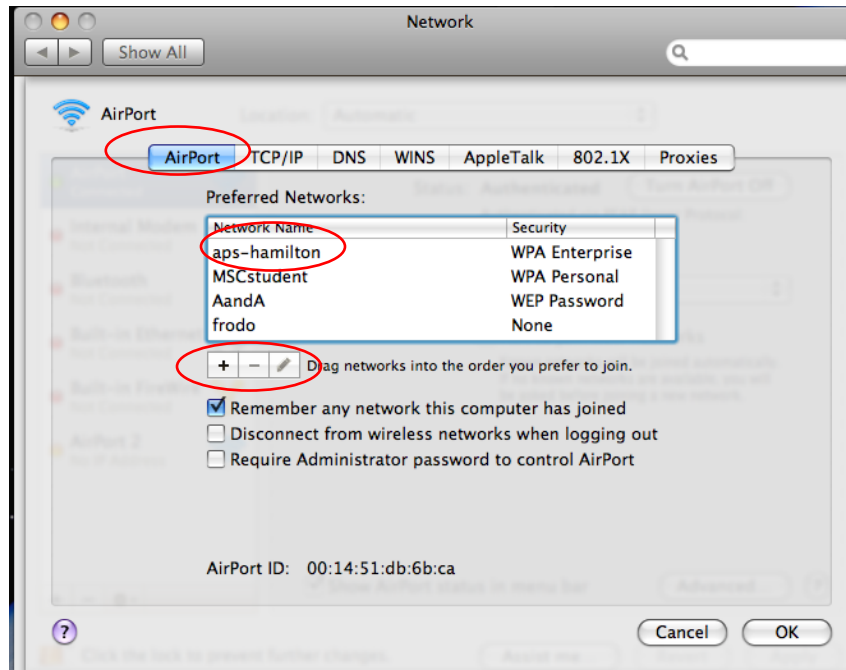


2. Select **802.1x** in the menu row.
3. In the option labeled Domain select the double arrow that says *Login Window* and select **User**.
4. Click on the Plus to create a new profile and name the profile Hamilton Secure.

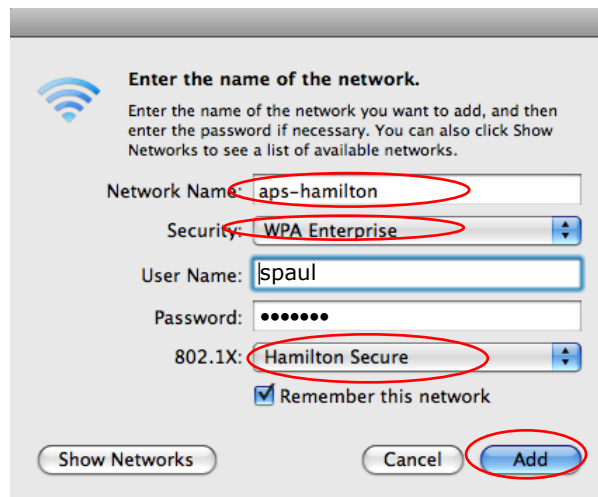


5. In the box labeled *Wireless Network:* type aps-hamilton.

6. Uncheck the box TTLS.
7. Click **OK**.
8. Click the **Apply**.
9. Click **Advanced**.
10. Select *Airport* in the menu row.
11. If aps-hamilton already exists double click on the network name, else click on the *plus*.



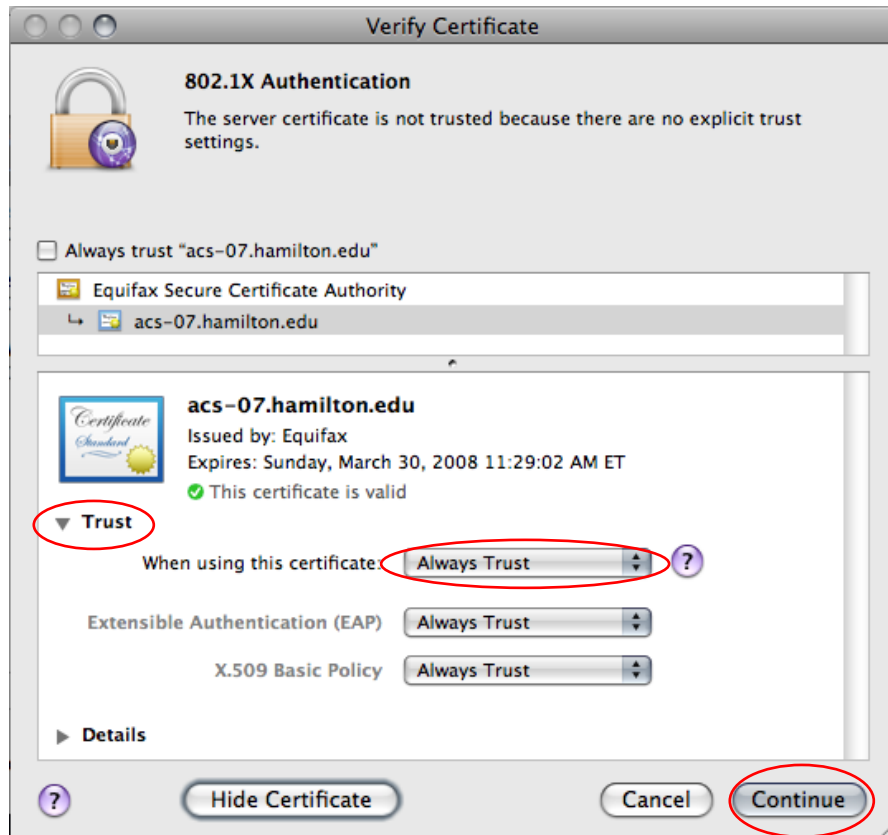
12. Type in the *Network Name*: aps-hamilton.
13. In the select option labeled *Security*: select **WPA Enterprise**.
14. Type in your Hamilton Network user name & password in the appropriate fields. This is the user ID and password you use to access your ESS or SSS folders.
15. Select **Hamilton Secure** in 802.1x.
16. Click **Add**.



17. Click **OK**.
18. Click **Apply**.
19. Close System Preferences.

NOTE: When connecting to the secure wireless for the first time you will be asked to validate the security certificate.

20. Click on the *triangle*.
21. The item labeled *When using this certificate:* select **Always Trust**.
22. Click **Continue** to connect to the Secure Wireless network.



For questions or comments regarding this document, please email helpdesk@hamilton.edu.