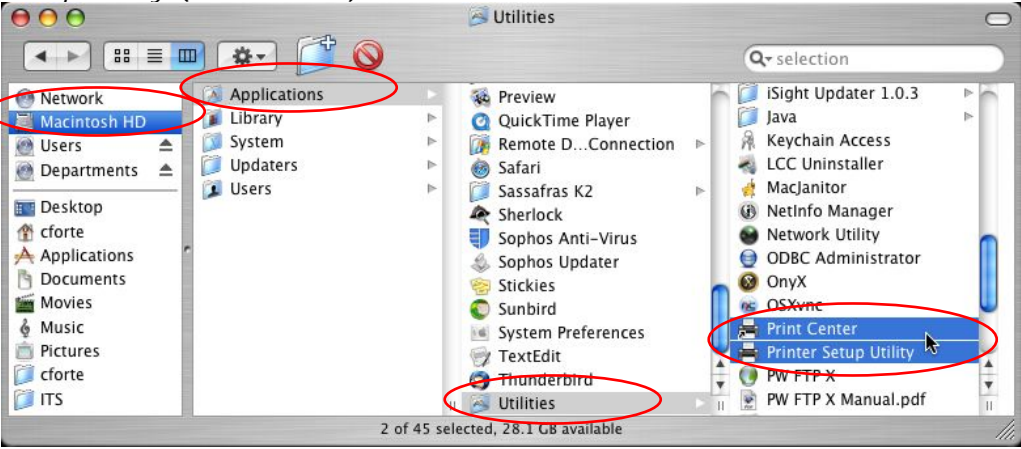
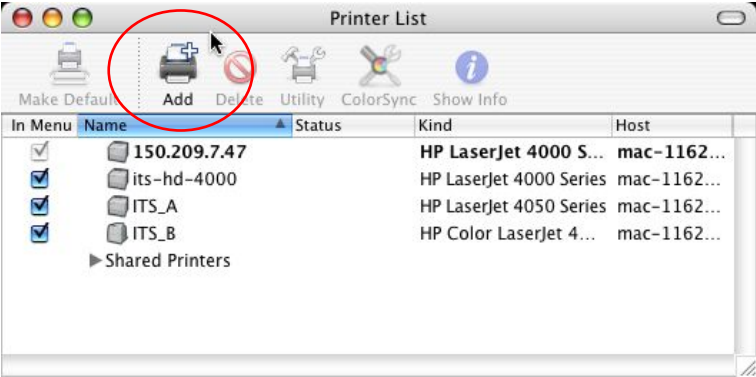


Network Printer Installation for Mac OS X

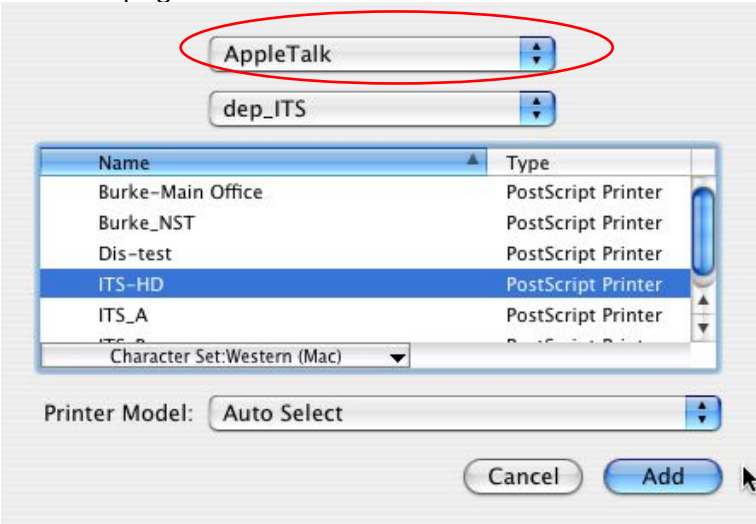
1. Go to *Macintosh HD/Applications/Utilities* and open *Print Center* (OS X 10.2) or *Printer Setup Utility* (OS X 10.3+)



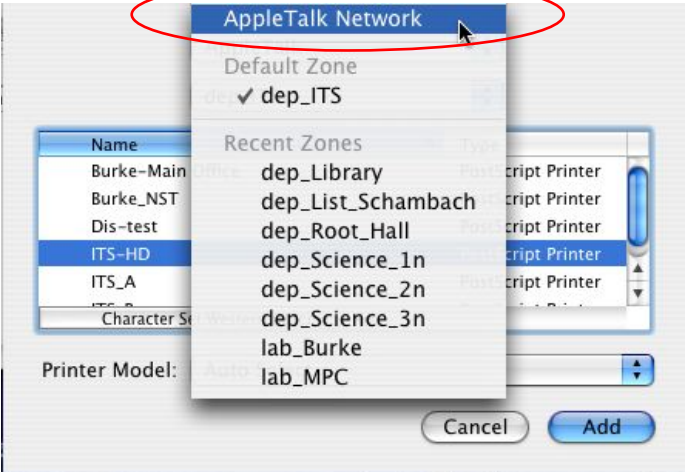
2. Click on **Add**.



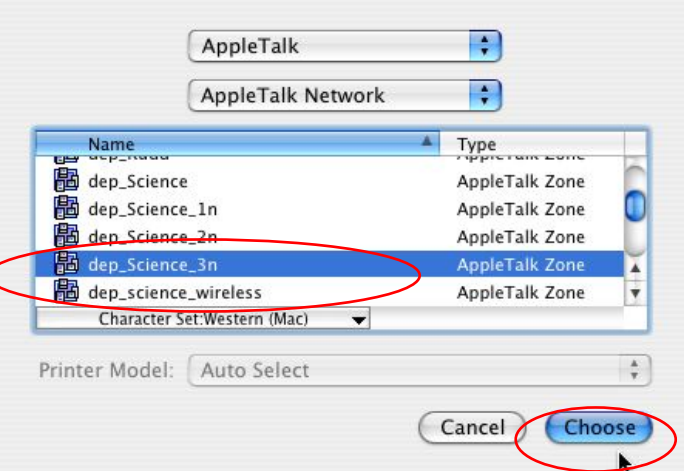
3. Select *AppleTalk* in the first dropdown list. The list below is the AppleTalk Zone and will default to the zone that your computer is in. If the printer is in this zone, skip to step 4 on the next page.



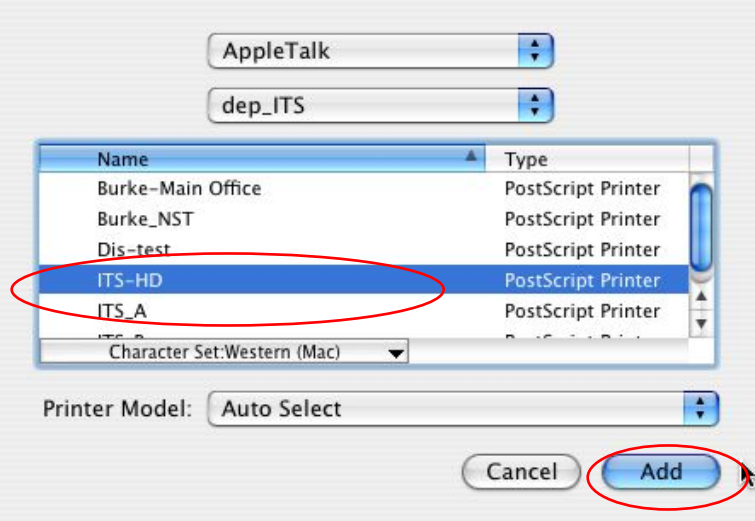
- a. If you need to add a printer that resides in a different AppleTalk zone than your computer does, select **AppleTalk Network** in the second dropdown list.



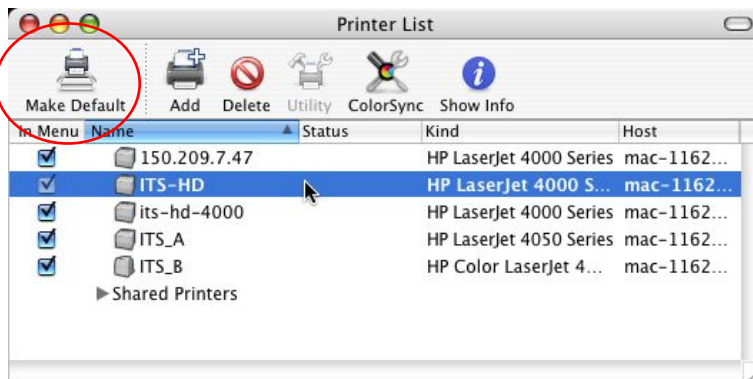
- b. Select the AppleTalk Zone of the printer that you wish to add and click **Choose**.



- 4. Select the printer that you want to print to and click **Add**.



- The printer that was just added will now show up in the printer list and will automatically be set as the default printer. If you do not wish to use that printer by default, simply select the printer you do want to be the default and set it as such.



For questions or comments regarding this document, please e-mail: helpdesk@hamilton.edu