






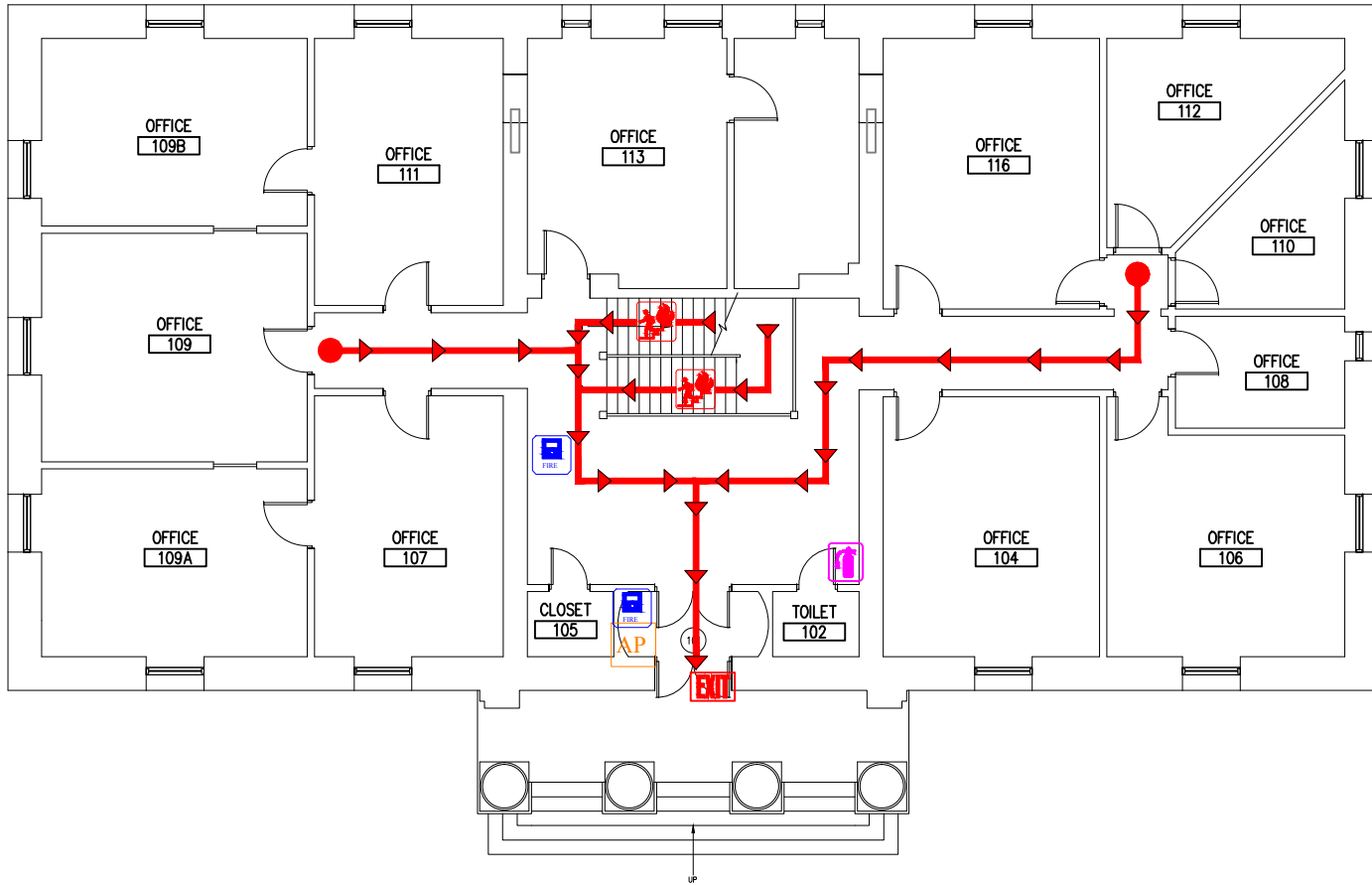


Legend






-  Evacuation Route
-  Stair Evacuation Route
-  Fire Alarm Pull Station
-  Fire Extinguisher
-  Emergency Fire Exit
-  Annunciator Panel
-  Sprinkler Room



Basement

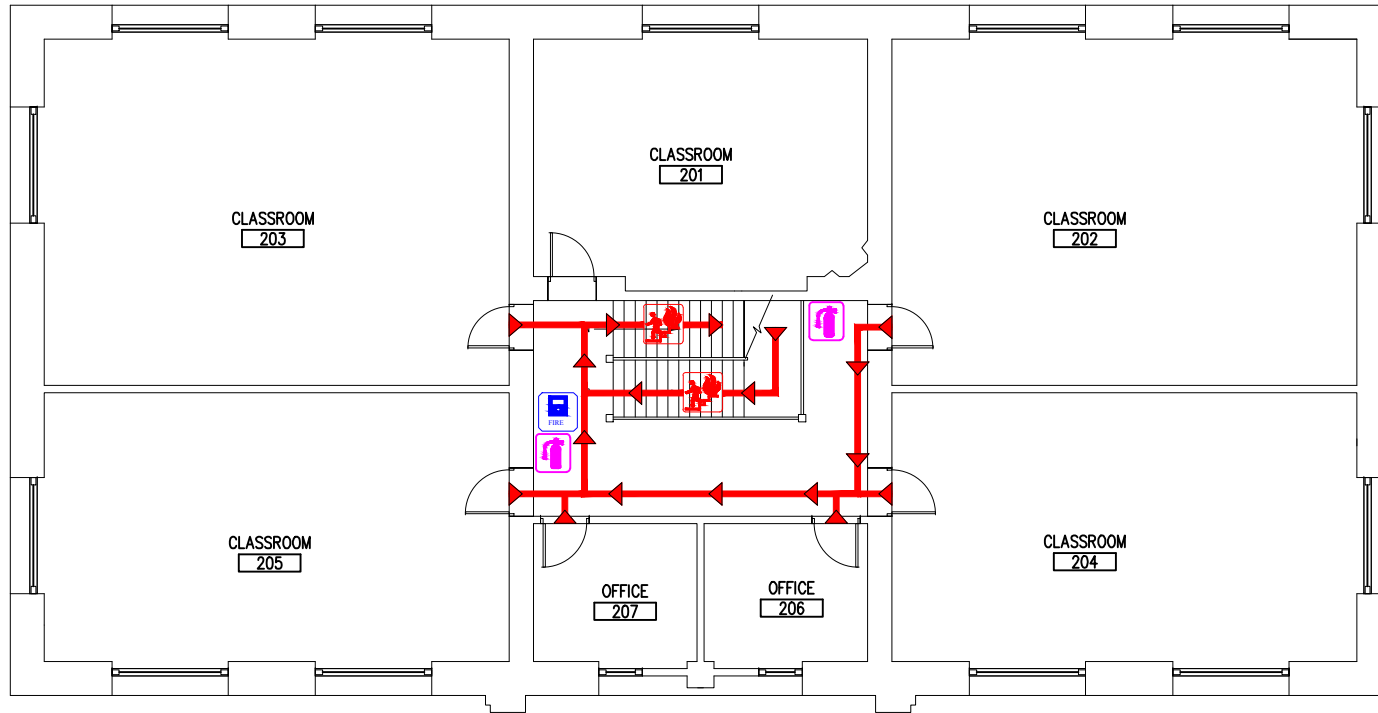


Legend





-  Evacuation Route
-  Stair Evacuation Route
-  Fire Alarm Pull Station
-  Fire Extinguisher
-  Emergency Fire Exit



Level 1

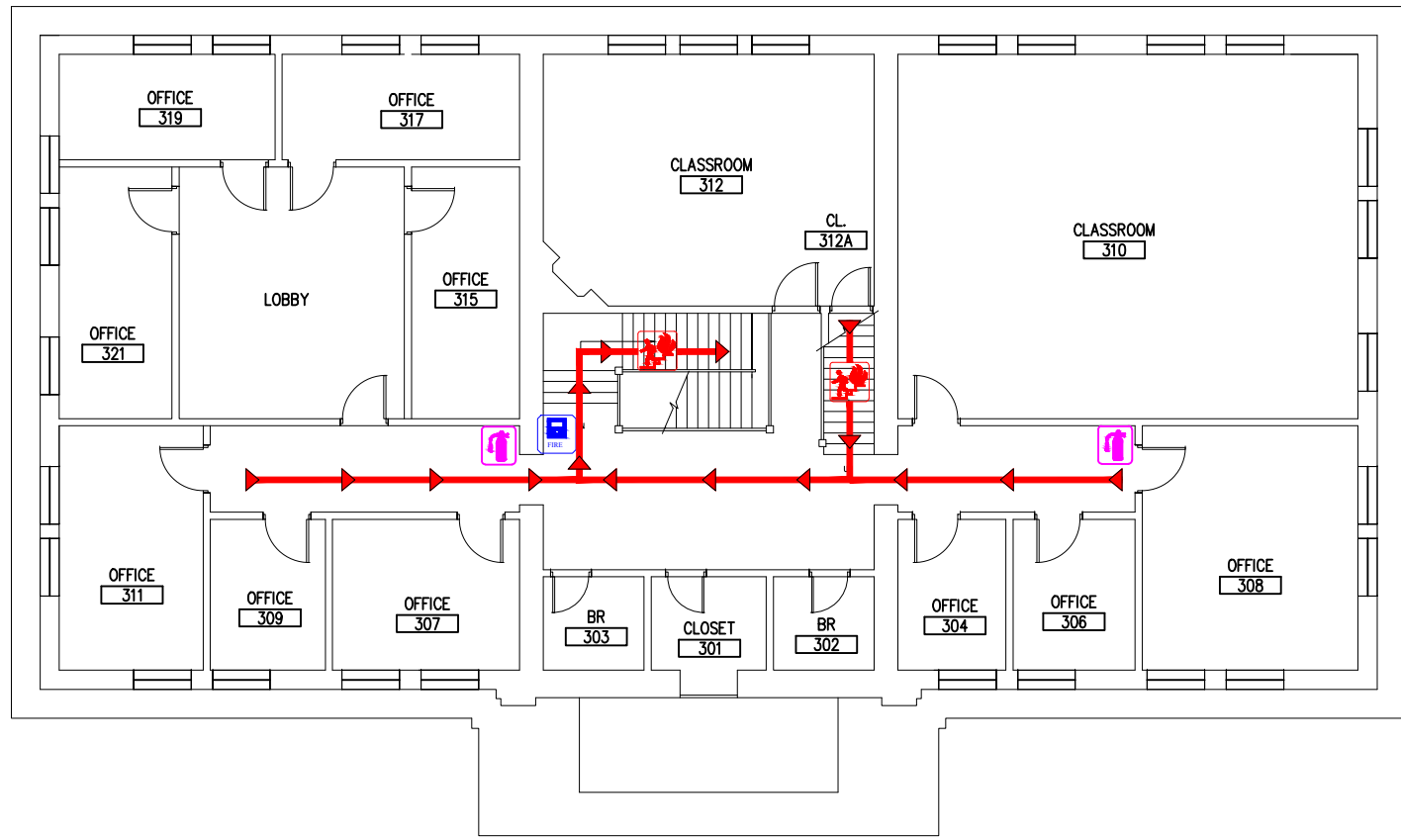


Legend





-  Evacuation Route
-  Stair Evacuation Route
-  Fire Alarm Pull Station
-  Fire Extinguisher



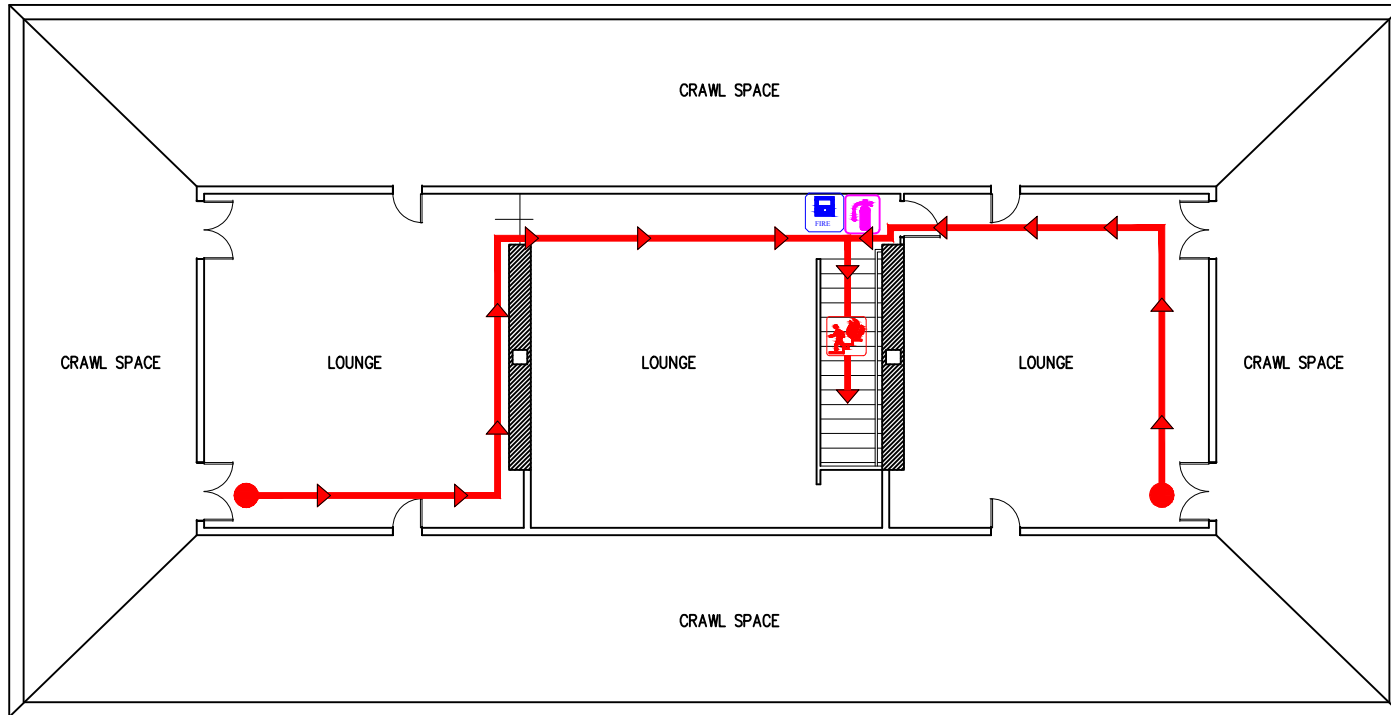
Level 2



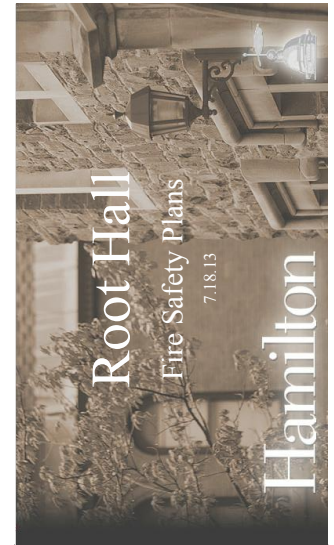
Legend

-  Evacuation Route
-  Stair Evacuation Route
-  Fire Alarm Pull Station
-  Fire Extinguisher



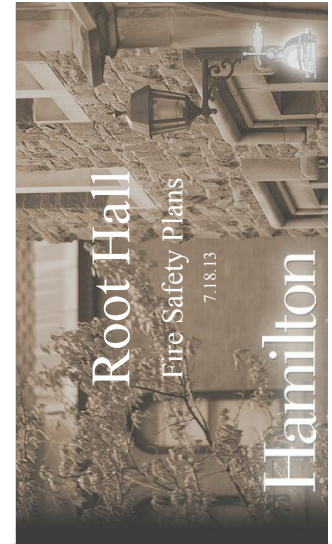
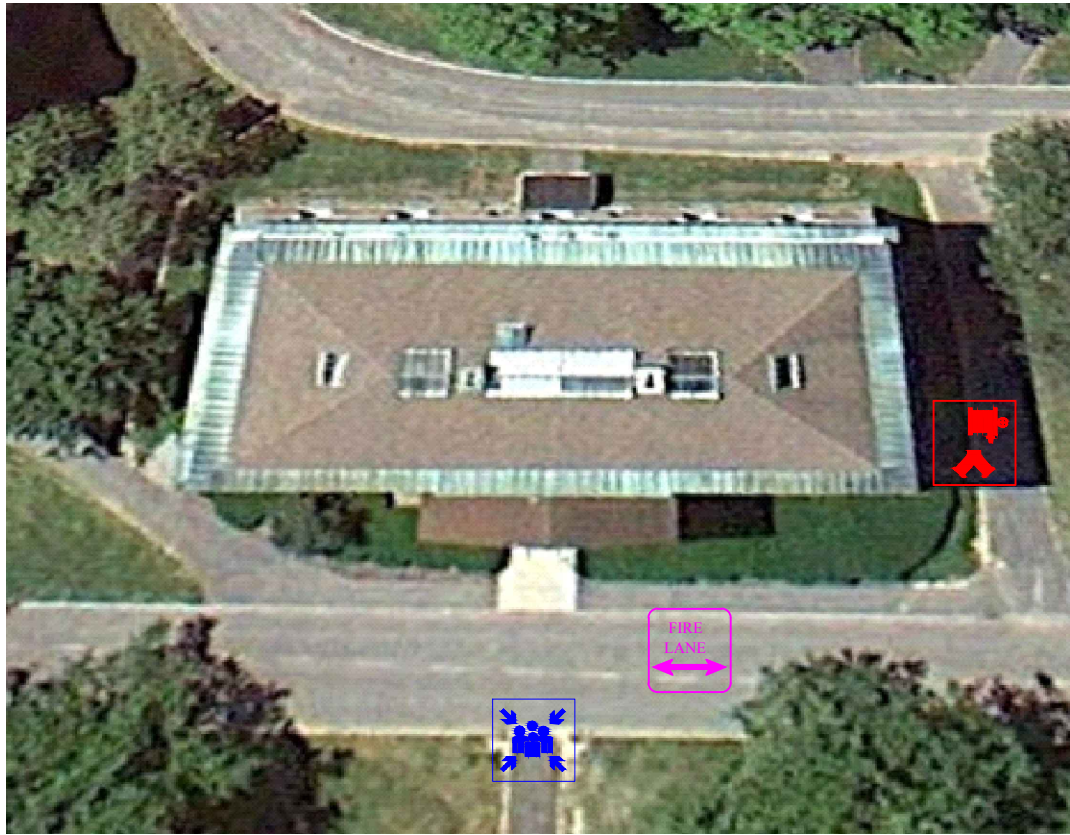


Level 4



Legend

-  Evacuation Route
-  Stair Evacuation Route
-  Fire Alarm Pull Station
-  Fire Extinguisher



Legend



Fire Dept.
Connection



Muster
Point



Fire Dept.
Access Route

ROOT HALL

Building Coordinator	Muster Point	Primary Assembly Point
Margaret Thickstun	Main quad	Commons Dining Hall
Fire Safety System Info	Fire Sprinklers, Monitored Smoke/Heat Detectors	
Special Fire Safety Notes	<ul style="list-style-type: none"> If the single means of egress is obstructed with fire or smoke during an emergency evacuation, evacuees should shelter in place above the fire/smoke condition, and permit the sprinkler system to perform its function. The 4th floor attic/lounge is not a reserveable classroom space through the Registrar's office, and should not be used as such. It may only be used as a study lounge for individuals or very small groups (5+/-). 	

